

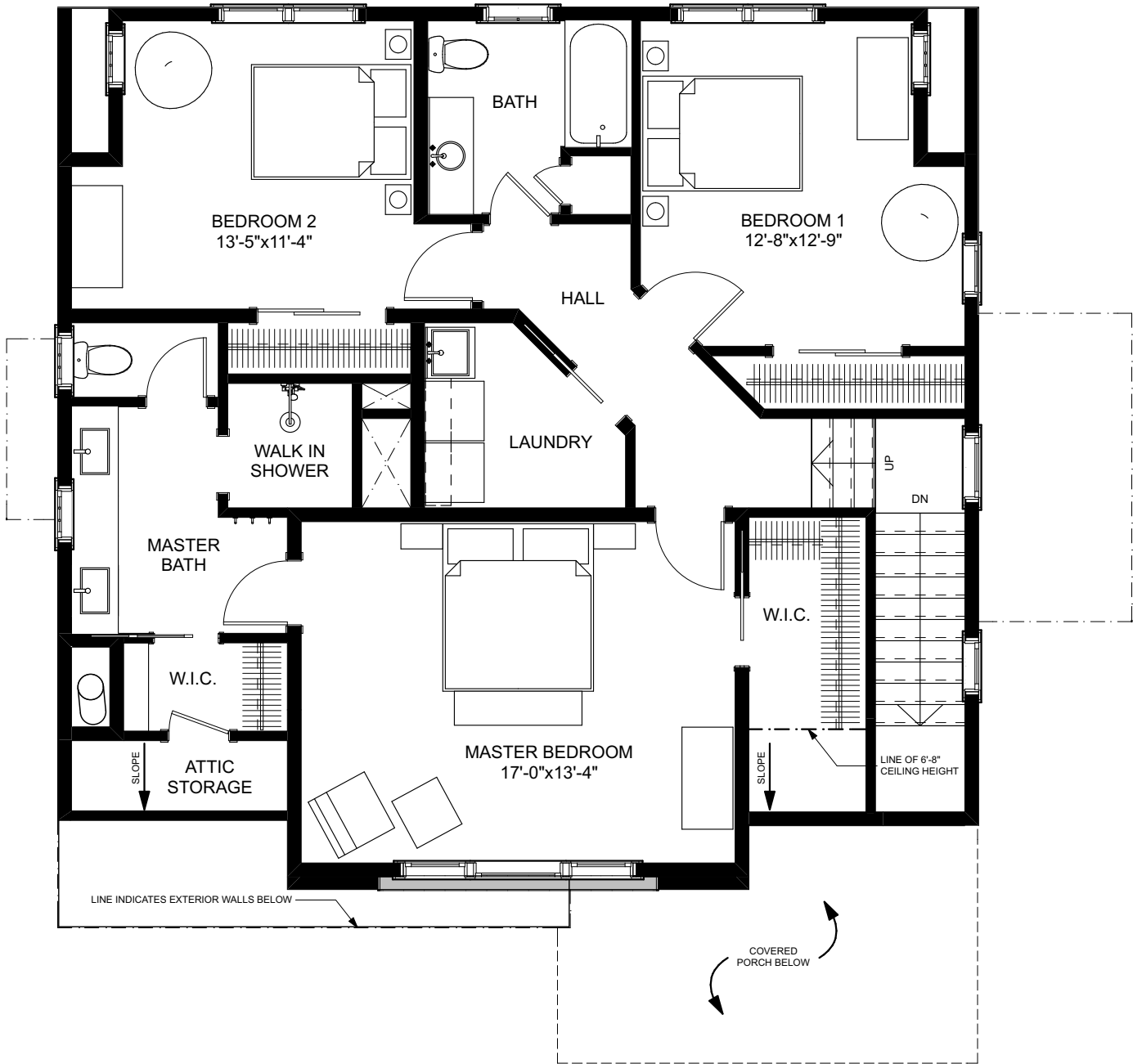
FIRST FLOOR



**BUNGALOW
COMPANY**

THE TUMALO

2 STORY | 3 BEDROOMS | 2.5 BATHS
 OVERALL DIMENSIONS: 40'-6" x 44'-0" (26'-9" +/- TALL) | 2,357 SQ.FT.
 FOUNDATION: CRAWL SPACE



SECOND FLOOR



**BUNGALOW
 COMPANY**

THE TUMALO

2 STORY | 3 BEDROOMS | 2.5 BATHS
 OVERALL DIMENSIONS: 40'-6" x 44'-0" (26'-9" +/- TALL) | 2,357 SQ.FT.
 FOUNDATION: CRAWL SPACE