

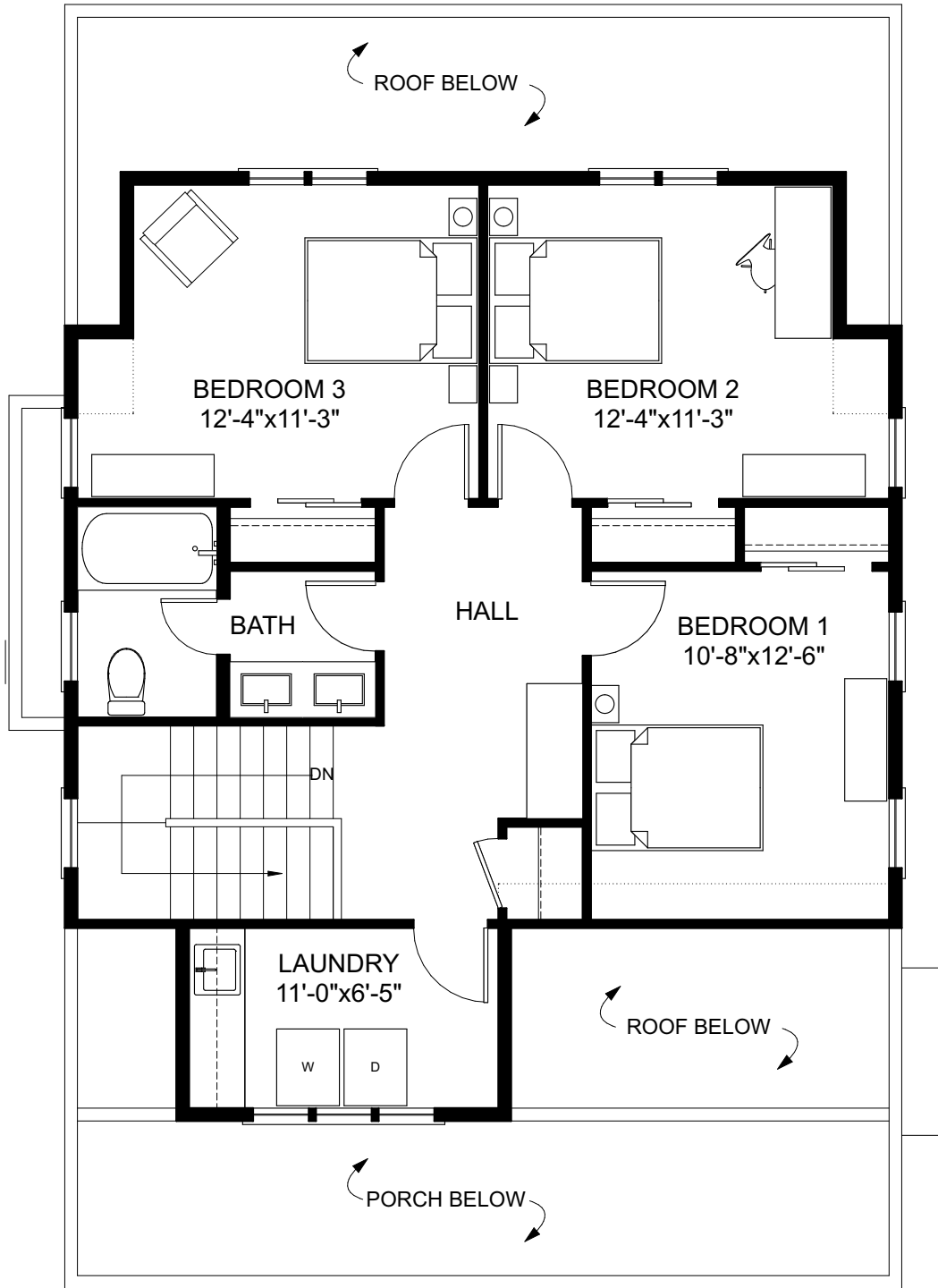
FIRST FLOOR



**BUNGALOW
COMPANY**

THE CHERRY

2 STORY | 4 BEDROOMS | 2.5 BATHS
 OVERALL DIMENSIONS: 32'-0" x 46'-0" (24'-8" +/- TALL) | 2193 SQ.FT.
 FIRST FLOOR: 1320 SQ. FT. | SECOND FLOOR: 873 SQ. FT.
 FOUNDATION: CRAWL SPACE



SECOND FLOOR



**BUNGALOW
COMPANY**

THE CHERRY

2 STORY | 4 BEDROOMS | 2.5 BATHS
 OVERALL DIMENSIONS: 32'-0" x 46'-0" (24'-8" +/- TALL) | 2193 SQ.FT.
 FIRST FLOOR: 1320 SQ. FT. | SECOND FLOOR: 873 SQ. FT.
 FOUNDATION: CRAWL SPACE