



FIRST FLOOR

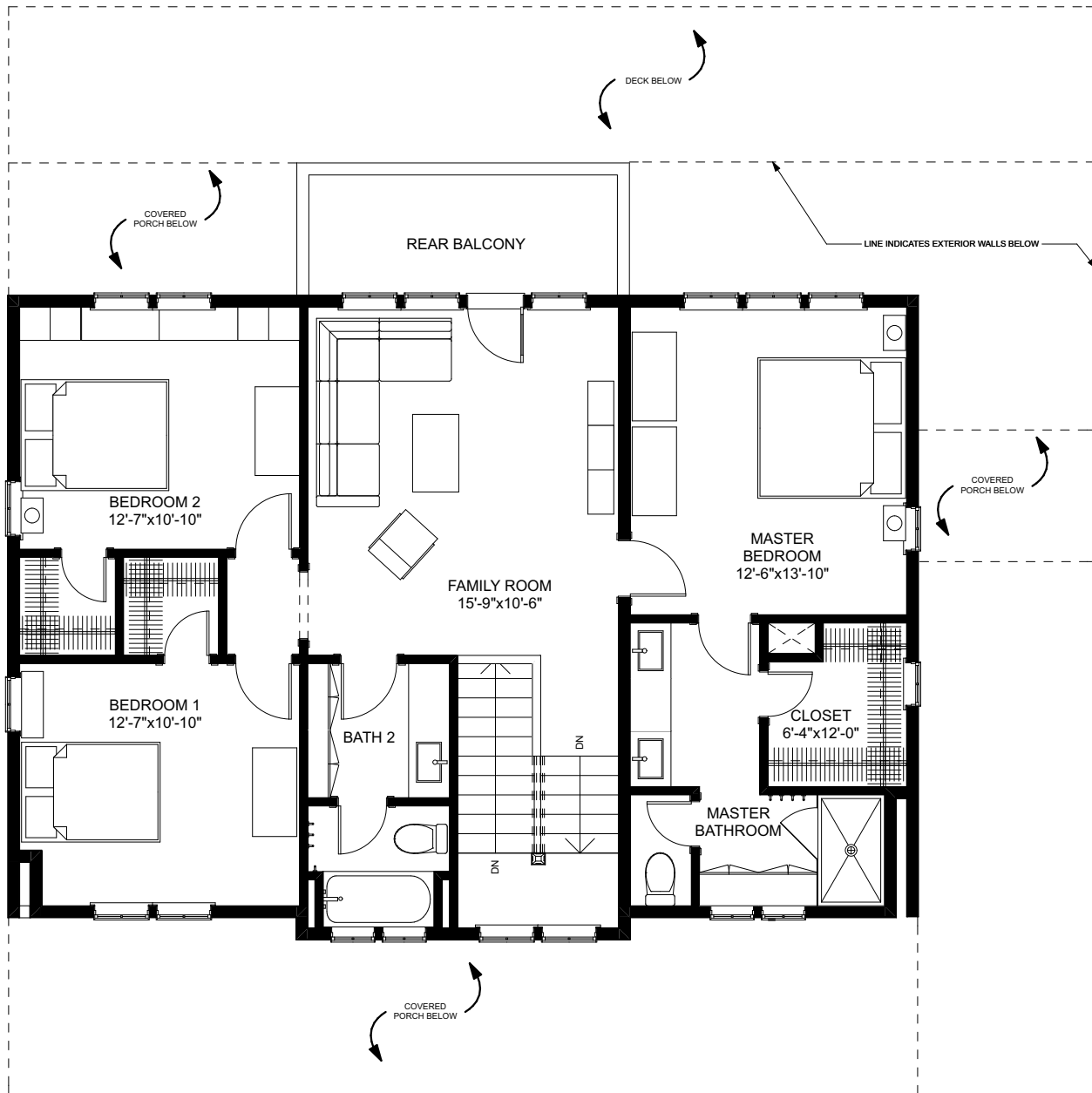


**BUNGALOW
COMPANY**

THE SHENANDOAH

2 STORY + BASEMENT | 4 BEDROOMS | 3 BATHROOMS
 OVERALL DIMENSIONS: 34'-0" x 53'-0" + 8' FRONT PORCH (26'-7" +/- TALL) | 3,767 SQ. FT.
 FIRST FLOOR: 1,391 SQ. FT. | SECOND FLOOR: 1,081 SQ. FT.
 BASEMENT: 1,295 SQ. FT.

920 NW BOND ST. STE 203, BEND, OR 97703 | PH: 888-945-9206 | INFO@THEBUNGALOWCOMPANY.COM



SECOND FLOOR



**BUNGALOW
COMPANY**

THE SHENANDOAH

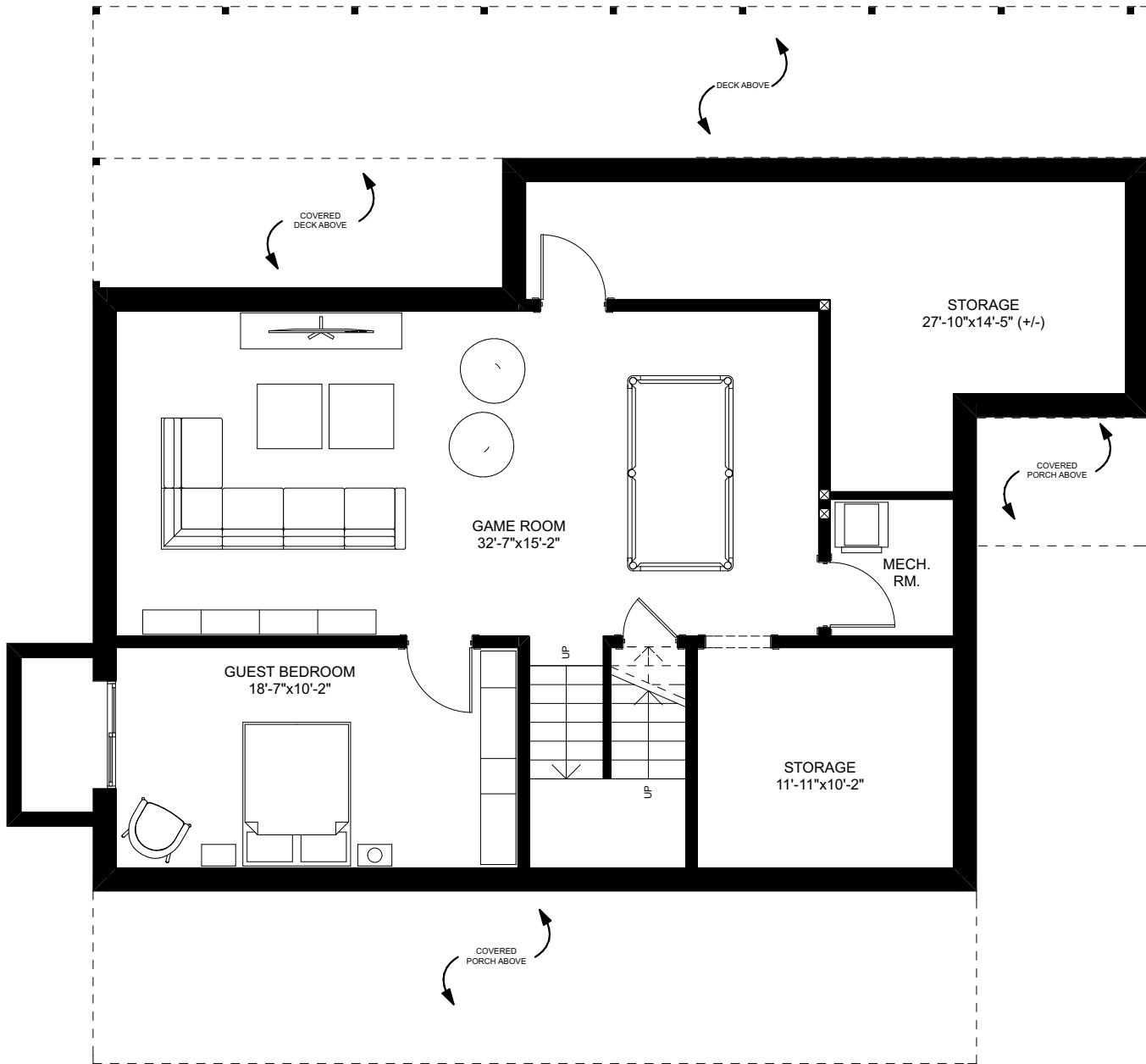
2 STORY + BASEMENT | 4 BEDROOMS | 3 BATHROOMS

OVERALL DIMENSIONS: 34'-0" x 53'-0" + 8' FRONT PORCH (26'-7" +/- TALL) | 3,767 SQ. FT.

FIRST FLOOR: 1,391 SQ. FT. | SECOND FLOOR: 1,081 SQ. FT.

BASEMENT: 1,295 SQ. FT.

920 NW BOND ST. STE 203, BEND, OR 97703 | PH: 888-945-9206 | INFO@THEBUNGALOWCOMPANY.COM



BASEMENT



**BUNGALOW
COMPANY**

THE SHENANDOAH

2 STORY + BASEMENT | 4 BEDROOMS | 3 BATHROOMS

OVERALL DIMENSIONS: 34'-0" x 53'-0" + 8' FRONT PORCH (26'-7" +/- TALL) | 3,767 SQ. FT.

FIRST FLOOR: 1,391 SQ. FT. | SECOND FLOOR: 1,081 SQ. FT.

BASEMENT: 1,295 SQ. FT.

920 NW BOND ST. STE 203, BEND, OR 97703 | PH: 888-945-9206 | INFO@THEBUNGALOWCOMPANY.COM