

FIRST FLOOR

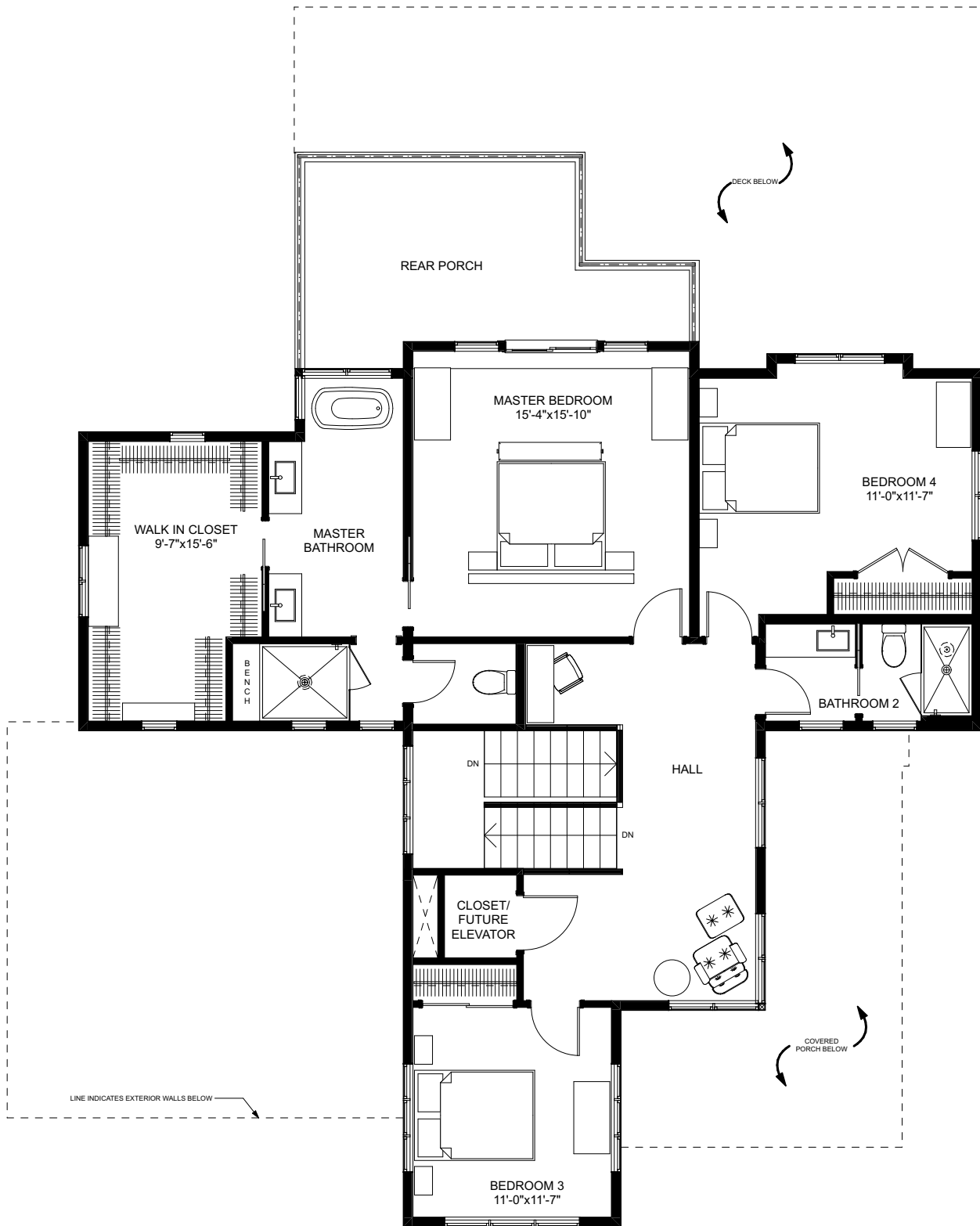


**BUNGALOW
COMPANY**

THE MT. ADAMS

2 STORY HOME + BASEMENT | 5 BEDROOMS | 3.5 BATHROOMS
 OVERALL DIMENSIONS: 54'-0" x 59'-6" (28'-10" +/- TALL) | 4,629 SQ. FT.
 FIRST FLOOR: 1,658 SQ. FT. | SECOND FLOOR: 1,311 SQ. FT.
 BASEMENT: 1,659 SQ. FT. | ATTACHED GARAGE: 438 SQ. FT.

920 NW BOND ST. STE 203, BEND, OR 97703 | PH: 888-945-9206 | INFO@THEBUNGALOWCOMPANY.COM



SECOND FLOOR

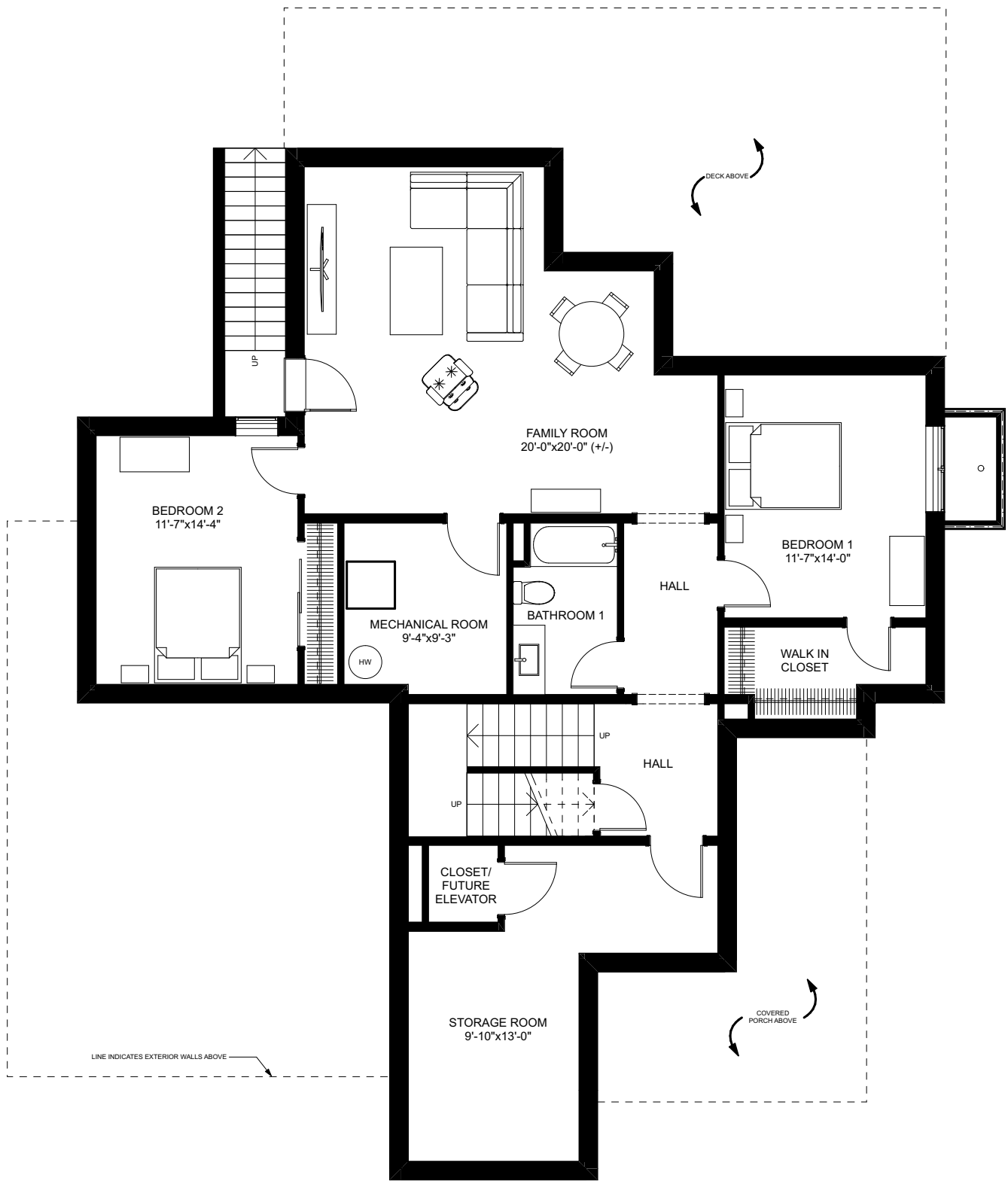


**BUNGALOW
COMPANY**

THE MT. ADAMS

2 STORY HOME + BASEMENT | 5 BEDROOMS | 3.5 BATHROOMS
 OVERALL DIMENSIONS: 54'-0" x 59'-6" (28'-10" +/- TALL) | 4,629 SQ.FT.
 FIRST FLOOR: 1,658 SQ. FT. | SECOND FLOOR: 1,311 SQ. FT.
 BASEMENT: 1,659 SQ. FT. | ATTACHED GARAGE: 438 SQ. FT.

920 NW BOND ST. STE 203, BEND, OR 97703 | PH: 888-945-9206 | INFO@THEBUNGALOWCOMPANY.COM



BASEMENT



**BUNGALOW
COMPANY**

THE MT. ADAMS

2 STORY HOME + BASEMENT | 5 BEDROOMS | 3.5 BATHROOMS
 OVERALL DIMENSIONS: 54'-0" x 59'-6" (28'-10" +/- TALL) | 4,629 SQ. FT.
 FIRST FLOOR: 1,658 SQ. FT. | SECOND FLOOR: 1,311 SQ. FT.
 BASEMENT: 1,659 SQ. FT. | ATTACHED GARAGE: 438 SQ. FT.

920 NW BOND ST. STE 203, BEND, OR 97703 | PH: 888-945-9206 | INFO@THEBUNGALOWCOMPANY.COM