

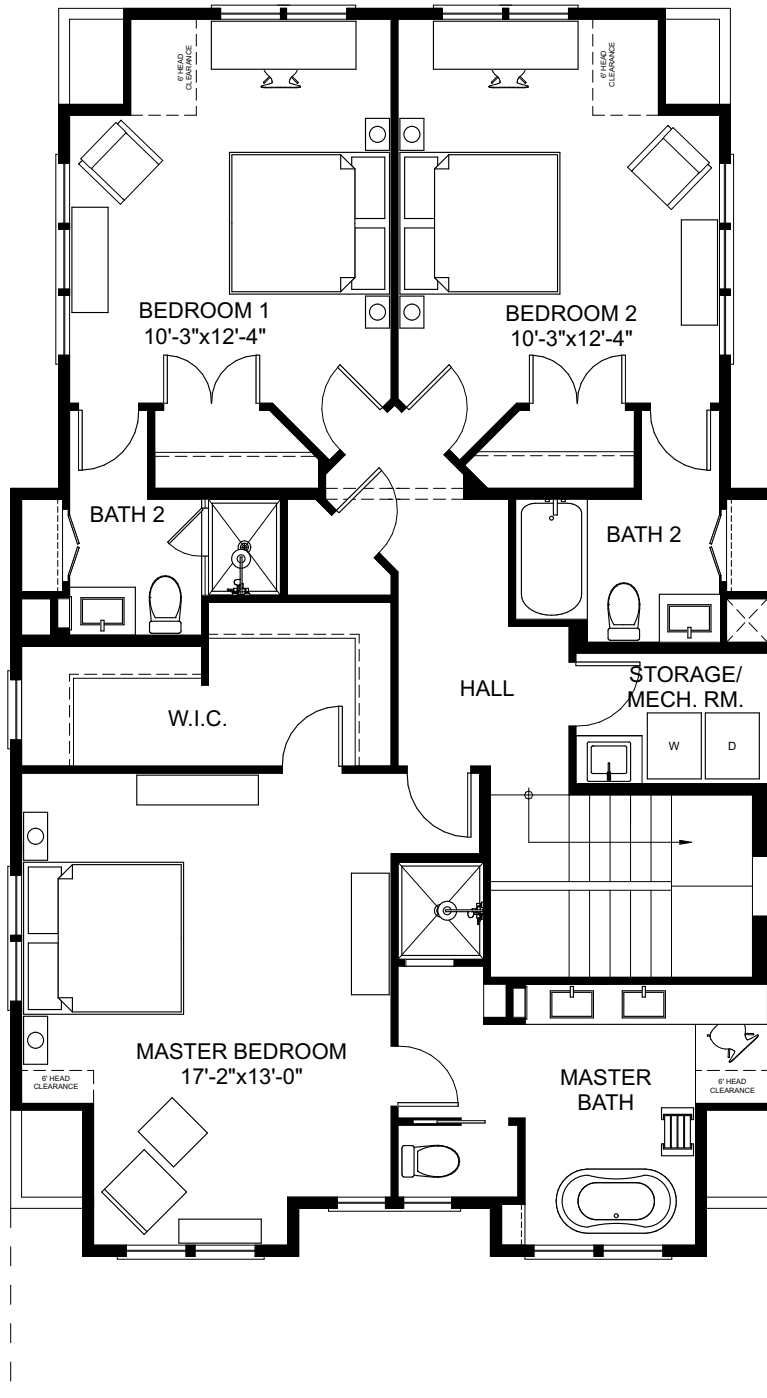
FIRST FLOOR



**BUNGALOW
COMPANY**

THE OLIVE

2 STORY + BASEMENT | 5 BEDROOMS | 4.5 BATHS
 OVERALL DIMENSIONS: 32'-0" x 58'-0" (26'-5" +/- TALL) | 3,800 SQ.FT.
 FIRST FLOOR: 1,389 SQ. FT. | SECOND FLOOR: 1,419 SQ. FT.
 BASEMENT: 1,002 SQ. FT. | DRIVE UNDER GARAGE + STORAGE: 518 SQ. FT.



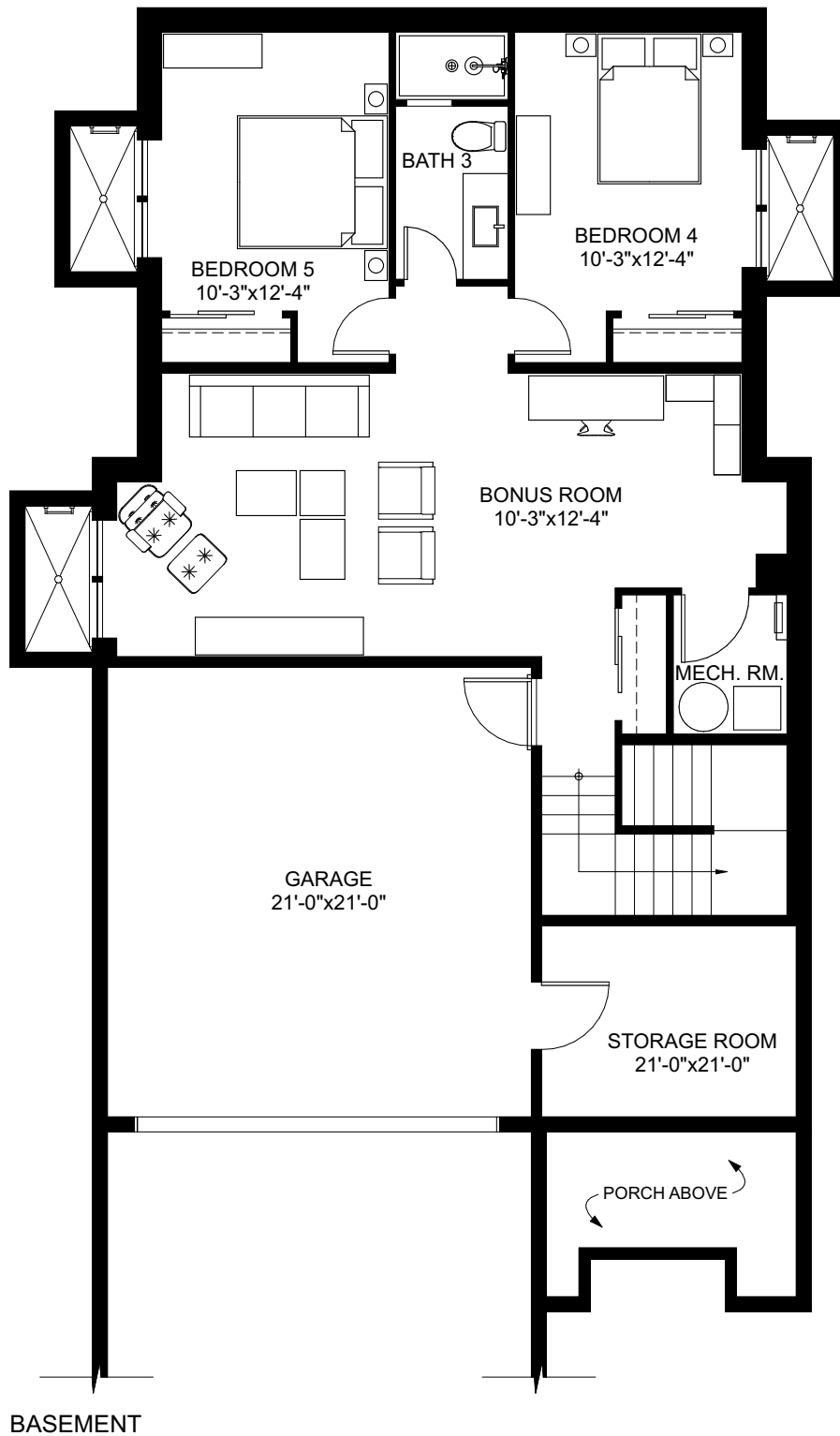
SECOND FLOOR



**BUNGALOW
COMPANY**

THE OLIVE

2 STORY + BASEMENT | 5 BEDROOMS | 4.5 BATHS
 OVERALL DIMENSIONS: 32'-0" x 58'-0" (26'-5" +/- TALL) | 3,800 SQ.FT.
 FIRST FLOOR: 1,389 SQ. FT. | SECOND FLOOR: 1,419 SQ. FT.
 BASEMENT: 1,002 SQ. FT. | DRIVE UNDER GARAGE + STORAGE: 518 SQ. FT.



**BUNGALOW
COMPANY**

THE OLIVE

2 STORY + BASEMENT | 5 BEDROOMS | 4.5 BATHS
 OVERALL DIMENSIONS: 32'-0" x 58'-0" (26'-5" +/- TALL) | 3,800 SQ.FT.
 FIRST FLOOR: 1,389 SQ. FT. | SECOND FLOOR: 1,419 SQ. FT.
 BASEMENT: 1,002 SQ. FT. | DRIVE UNDER GARAGE + STORAGE: 518 SQ. FT.