

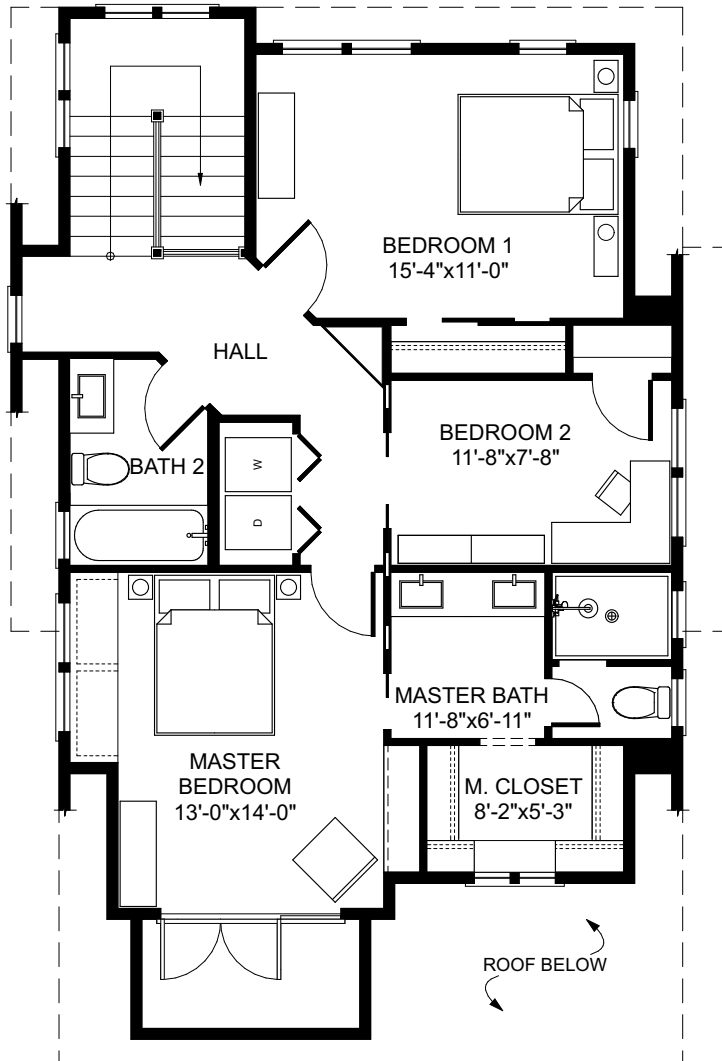
FIRST FLOOR



**BUNGALOW
COMPANY**

THE ZINNIA

2 STORY | 2 BEDROOMS | 2.5 BATHS
 OVERALL DIMENSIONS: 28'-0" x 44'-0" (24'-6" +/- TALL) | 1,858 SQ.FT.
 FIRST FLOOR: 1,024 SQ. FT. | SECOND FLOOR: 834 SQ. FT.
 FOUNDATION: UNFINISHED BASEMENT 1,024 SQ. FT.



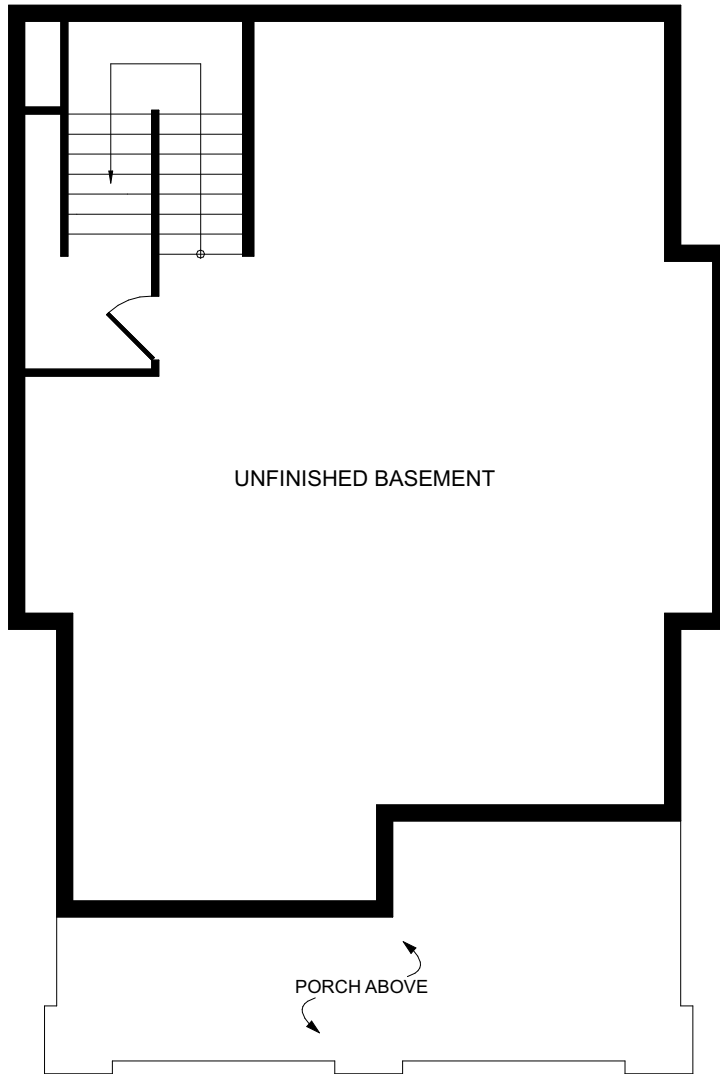
SECOND FLOOR



**BUNGALOW
COMPANY**

THE ZINNIA

2 STORY | 2 BEDROOMS | 2.5 BATHS
 OVERALL DIMENSIONS: 28'-0" x 44'-0" (24'-6" +/- TALL) | 1,858 SQ.FT.
 FIRST FLOOR: 1,024 SQ. FT. | SECOND FLOOR: 834 SQ. FT.
 FOUNDATION: UNFINISHED BASEMENT 1,024 SQ. FT.



BASEMENT



**BUNGALOW
COMPANY**

THE ZINNIA

2 STORY | 2 BEDROOMS | 2.5 BATHS
OVERALL DIMENSIONS: 28'-0" x 44'-0" (24'-6" +/- TALL) | 1,858 SQ.FT.
FIRST FLOOR: 1,024 SQ. FT. | SECOND FLOOR: 834 SQ. FT.
FOUNDATION: UNFINISHED BASEMENT 1,024 SQ. FT.