

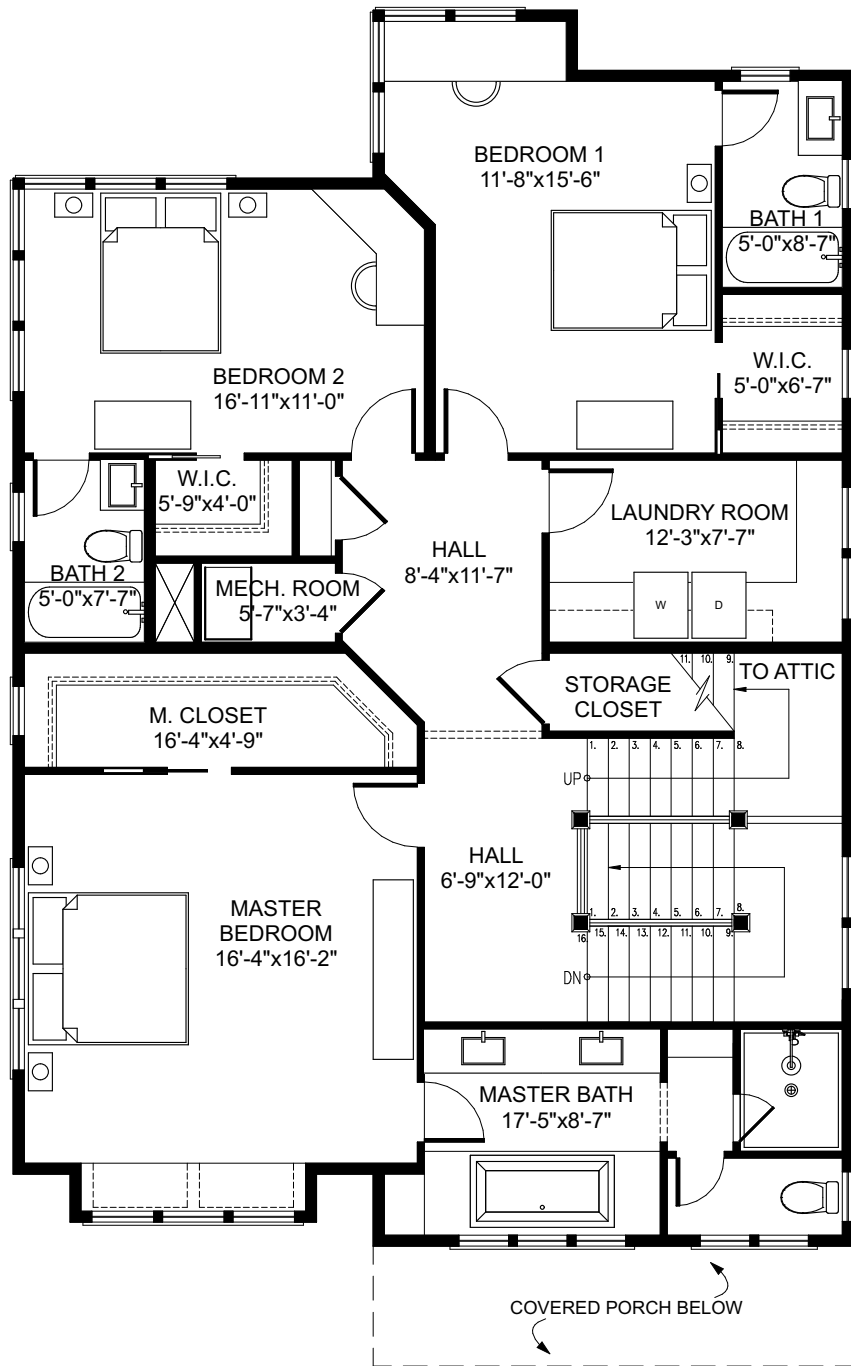
FIRST FLOOR



**BUNGALOW
COMPANY**

THE OLYMPIC

2 STORY with LOFT + BASEMENT | 4 BEDROOMS | 5.5 BATHS
 OVERALL DIMENSIONS: 35'-0" x 56'-6" (30' +/- TALL) | 4,761 SQ.FT.
 FIRST FLOOR: 1,644 SQ. FT. | SECOND FLOOR: 1,556 SQ. FT. | LOFT: 561 SQ. FT.
 OPTIONAL BASEMENT: 1,000 SQ. FT. | DRIVE UNDER GARAGE: 638 SQ. FT.



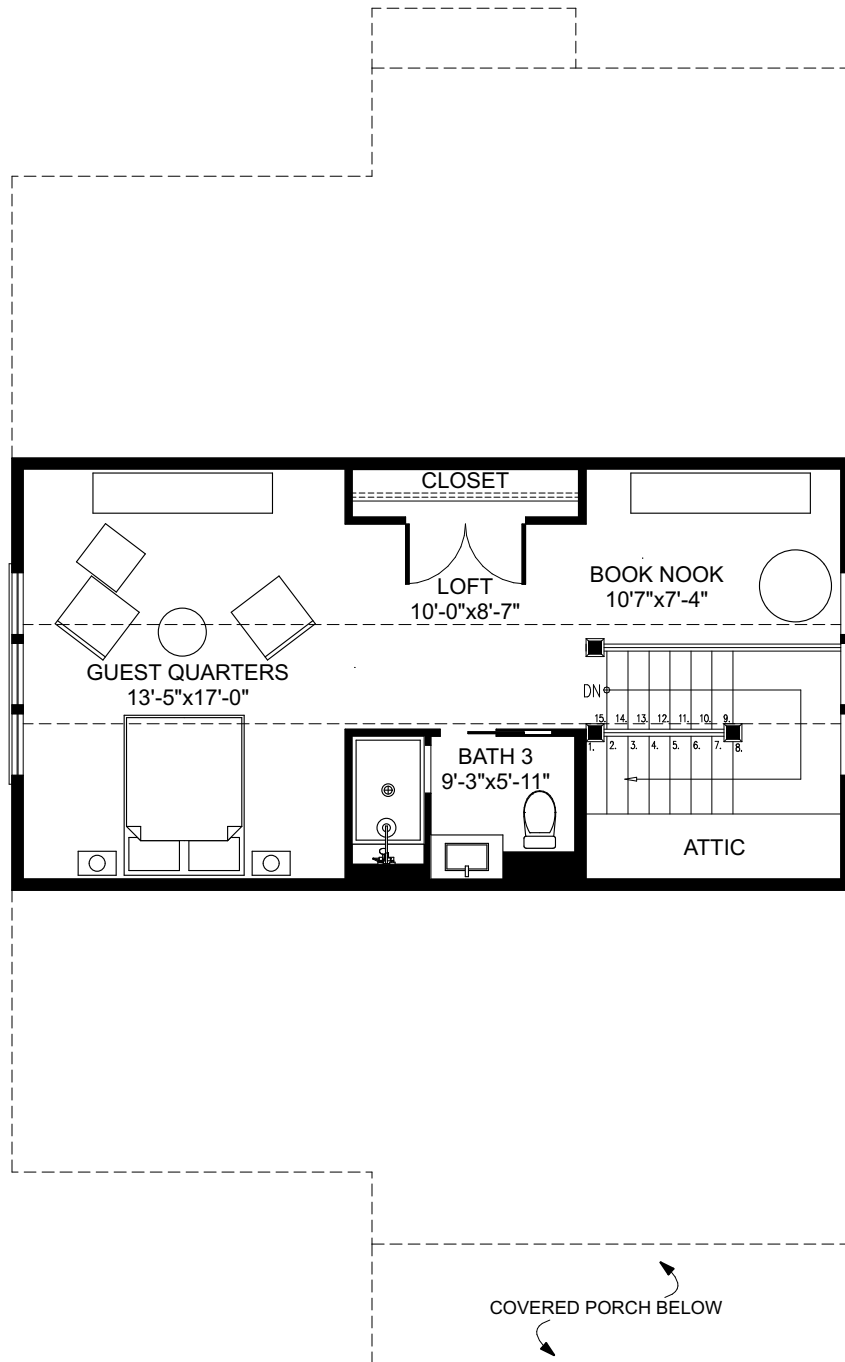
SECOND FLOOR



**BUNGALOW
COMPANY**

THE OLYMPIC

2 STORY with LOFT + BASEMENT | 4 BEDROOMS | 5.5 BATHS
 OVERALL DIMENSIONS: 35'-0" x 56'-6" (30' +/- TALL) | 4,761 SQ.FT.
 FIRST FLOOR: 1,644 SQ. FT. | SECOND FLOOR: 1,556 SQ. FT. | LOFT: 561 SQ. FT.
 OPTIONAL BASEMENT: 1,000 SQ. FT. | DRIVE UNDER GARAGE: 638 SQ. FT.



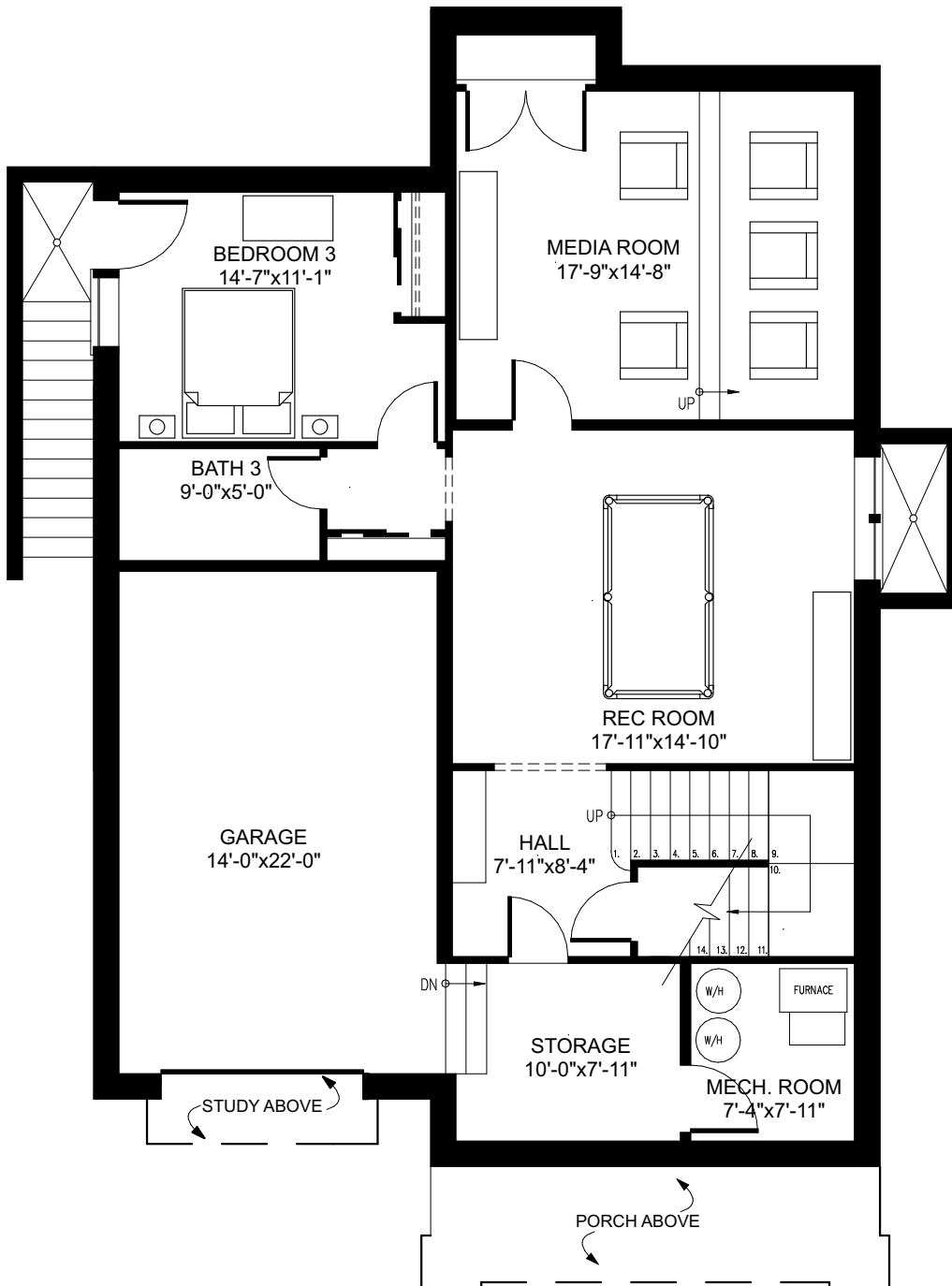
LOFT



**BUNGALOW
COMPANY**

THE OLYMPIC

2 STORY with LOFT + BASEMENT | 4 BEDROOMS | 5.5 BATHS
 OVERALL DIMENSIONS: 35'-0" x 56'-6" (30' +/- TALL) | 4,761 SQ.FT.
 FIRST FLOOR: 1,644 SQ. FT. | SECOND FLOOR: 1,556 SQ. FT. | LOFT: 561 SQ. FT.
 OPTIONAL BASEMENT: 1,000 SQ. FT. | DRIVE UNDER GARAGE: 638 SQ. FT.



BASEMENT



**BUNGALOW
COMPANY**

THE OLYMPIC

2 STORY with LOFT + BASEMENT | 4 BEDROOMS | 5.5 BATHS
 OVERALL DIMENSIONS: 35'-0" x 56'-6" (30' +/- TALL) | 4,761 SQ.FT.
 FIRST FLOOR: 1,644 SQ. FT. | SECOND FLOOR: 1,556 SQ. FT. | LOFT: 561 SQ. FT.
 OPTIONAL BASEMENT: 1,000 SQ. FT. | DRIVE UNDER GARAGE: 638 SQ. FT.