

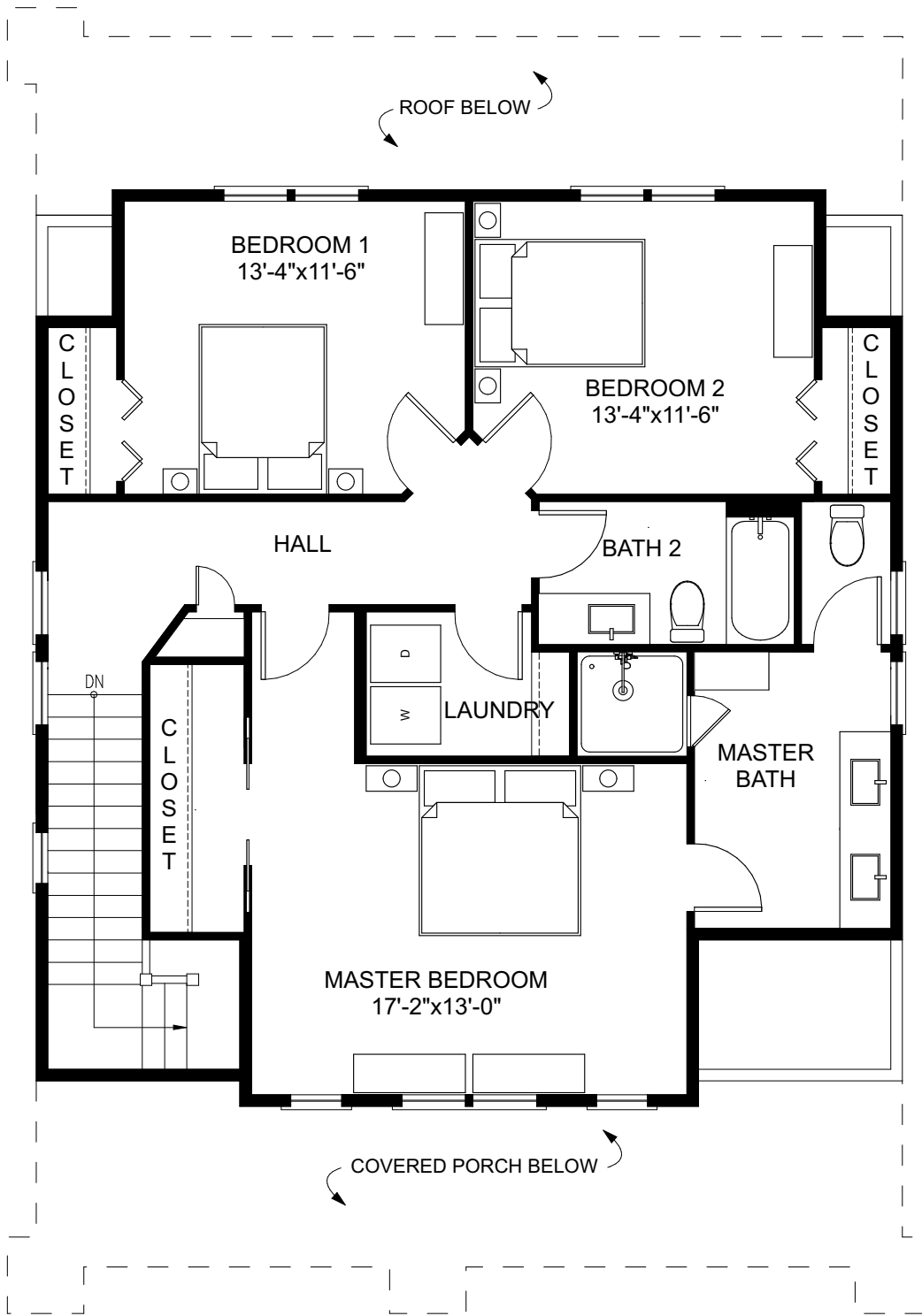
FIRST FLOOR



**BUNGALOW
COMPANY**

THE MT. BAKER

2 STORY | 3 BEDROOMS | 3 BATHS
 OVERALL DIMENSIONS: 34'-0" x 49'-0" (26'-6" +/- TALL) | 2,317 SQ.FT.
 FIRST FLOOR: 1,268 SQ. FT. | SECOND FLOOR: 1,049 SQ. FT.
 FOUNDATION: CRAWL SPACE



SECOND FLOOR



**BUNGALOW
COMPANY**

THE MT. BAKER

2 STORY | 3 BEDROOMS | 3 BATHS
 OVERALL DIMENSIONS: 34'-0" x 49'-0" (26'-6" +/- TALL) | 2,317 SQ.FT.
 FIRST FLOOR: 1,268 SQ. FT. | SECOND FLOOR: 1,049 SQ. FT.
 FOUNDATION: CRAWL SPACE