

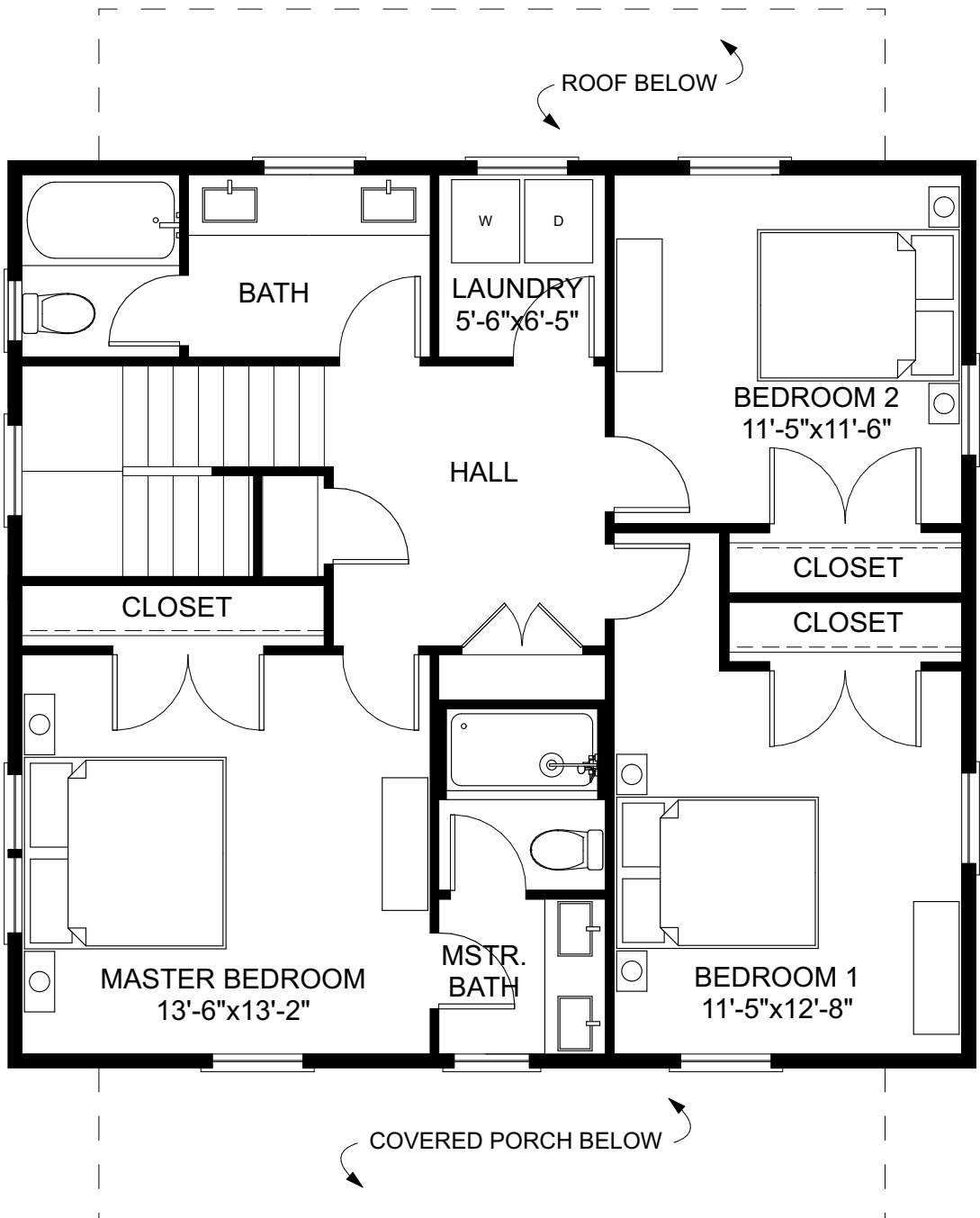
FIRST FLOOR



**BUNGALOW
COMPANY**

THE ELM

2 STORY | 3 BEDROOMS | 2.5 BATHS
 OVERALL DIMENSIONS: 32'-0" x 40'-0" (26'-6" +/- TALL) | 1,945 SQ.FT.
 FIRST FLOOR: 1,045 SQ. FT. | SECOND FLOOR: 899 SQ. FT.
 FOUNDATION: CRAWL SPACE



SECOND FLOOR



**BUNGALOW
COMPANY**

THE ELM

2 STORY | 3 BEDROOMS | 2.5 BATHS
 OVERALL DIMENSIONS: 32'-0" x 40'-0" (26'-6" +/- TALL) | 1,944 SQ.FT.
 FIRST FLOOR: 1,045 SQ. FT. | SECOND FLOOR: 899 SQ. FT.
 FOUNDATION: CRAWL SPACE