

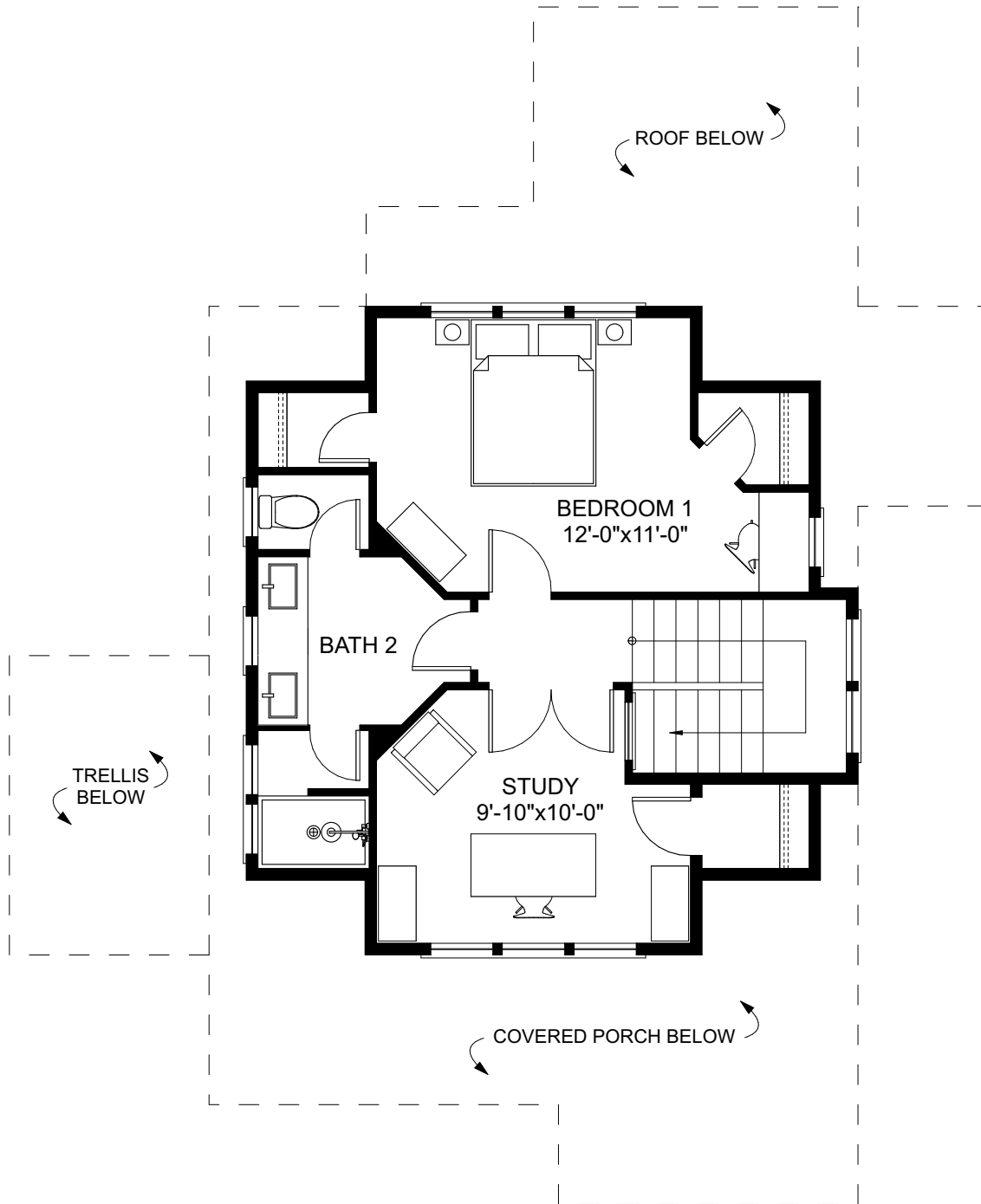
FIRST FLOOR



**BUNGALOW
COMPANY**

THE PEONY

2 STORY | 2 BEDROOMS | 2 BATHS
 OVERALL DIMENSIONS: 39'-0" x 48'-0" (20'-9" +/- TALL) | 1,379 SQ.FT.
 FIRST FLOOR: 880 SQ. FT. | SECOND FLOOR: 489 SQ. FT.
 FOUNDATION: CRAWL SPACE



SECOND FLOOR



**BUNGALOW
COMPANY**

THE PEONY

2 STORY | 2 BEDROOMS | 2 BATHS
 OVERALL DIMENSIONS: 39'-0" x 48'-0" (20'-9" +/- TALL) | 1,379 SQ.FT.
 FIRST FLOOR: 880 SQ. FT. | SECOND FLOOR: 489 SQ. FT.
 FOUNDATION: CRAWL SPACE