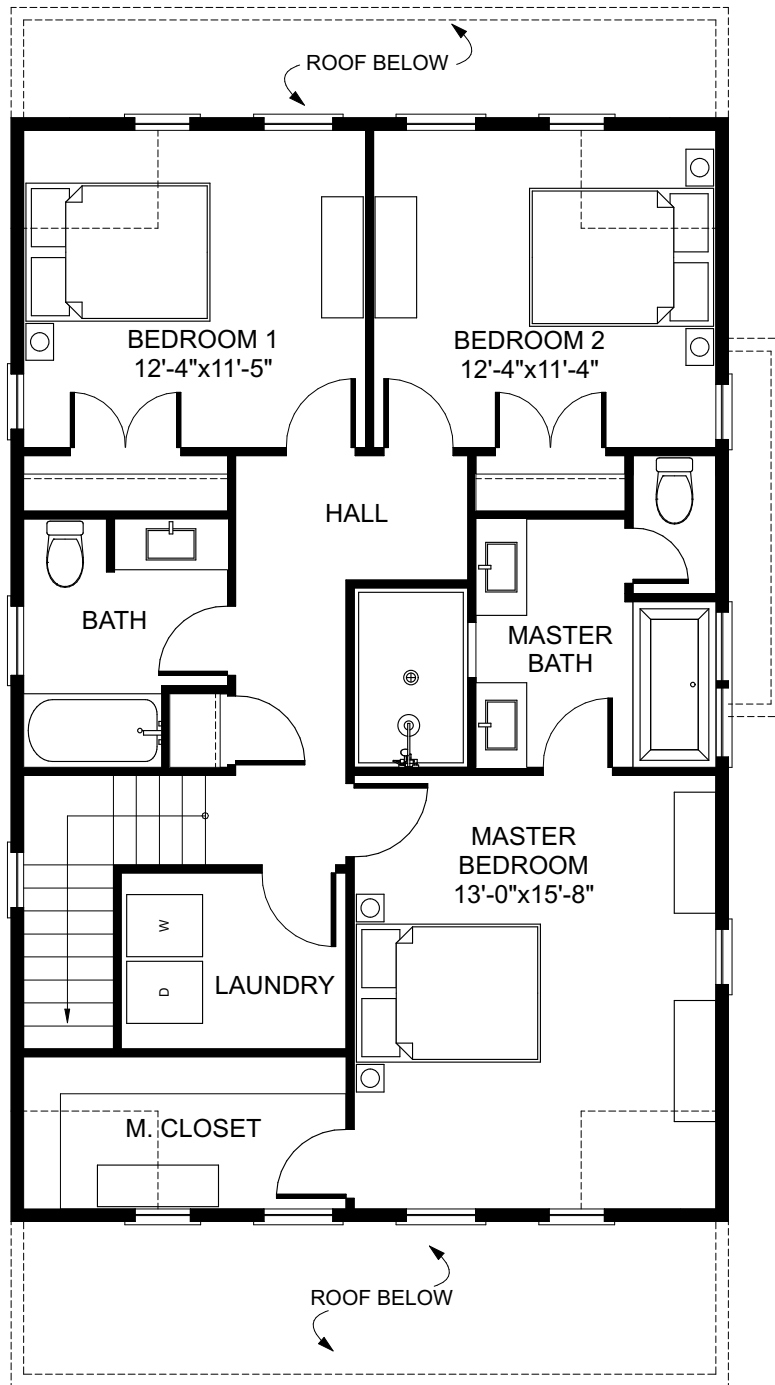


**BUNGALOW  
COMPANY**

### THE BIRCH

2 STORY | 3 BEDROOMS | 2.5 BATHS  
 OVERALL DIMENSIONS: 28'-0" x 50'-0" (24'-6" +/- TALL) | 2,135 SQ.FT.  
 FIRST FLOOR: 1,140 SQ. FT. | SECOND FLOOR: 995 SQ. FT.  
 FOUNDATION: CRAWLSPACE



SECOND FLOOR



**BUNGALOW  
COMPANY**

**THE BIRCH**

2 STORY | 3 BEDROOMS | 2.5 BATHS  
 OVERALL DIMENSIONS: 28'-0" x 50'-0" (24'-6" +/- TALL) | 2,135 SQ. FT.  
 FIRST FLOOR: 1,140 SQ. FT. | SECOND FLOOR: 995 SQ. FT.  
 FOUNDATION: CRAWLSPACE